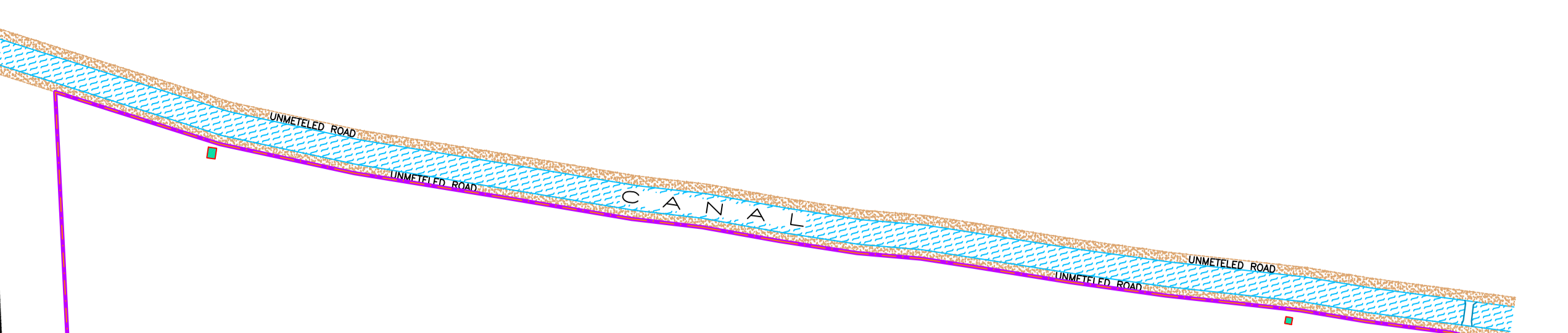


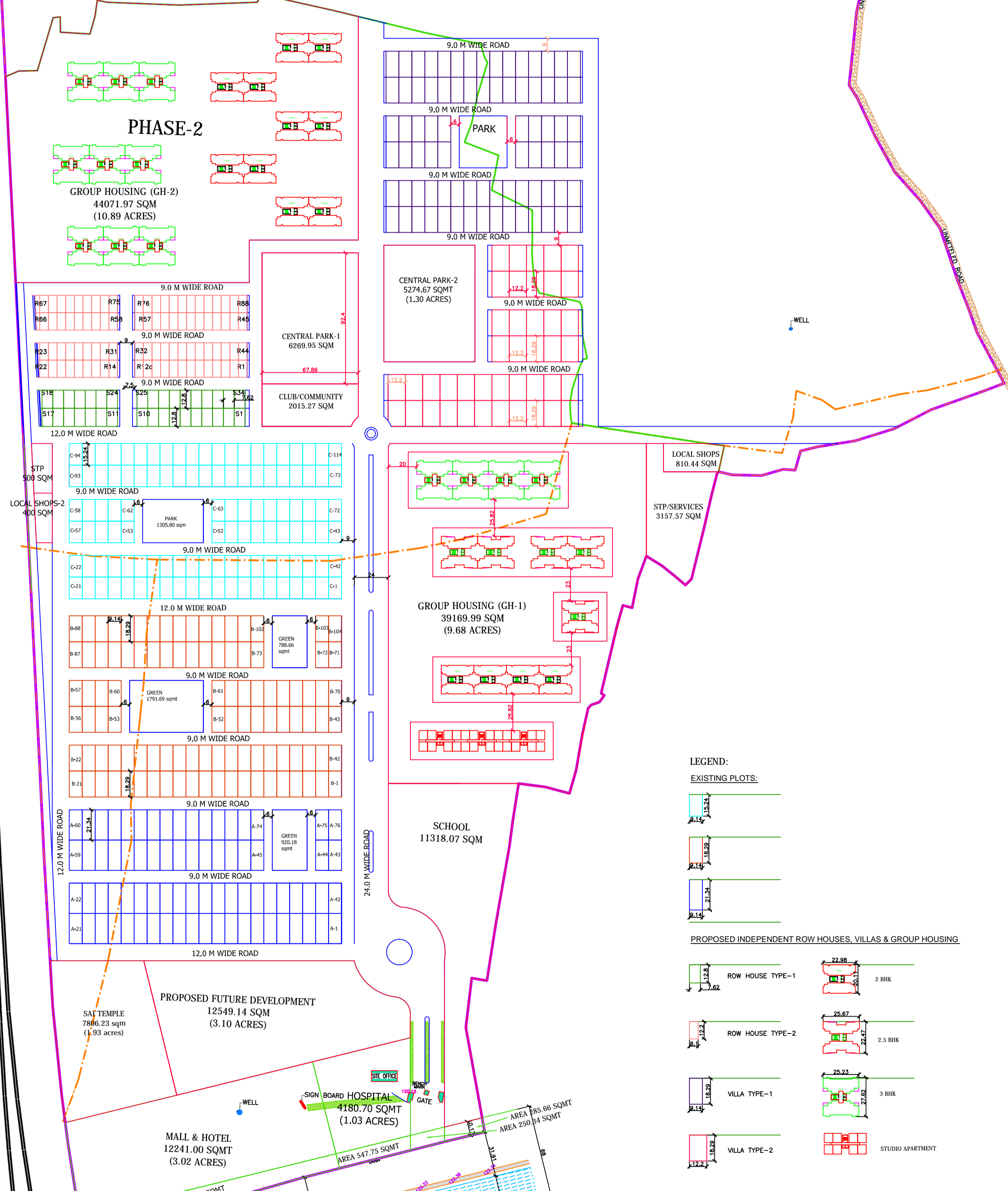
TO SULTANPUR



### PHASE-3

### PHASE-2

GROUP HOUSING (GH-2)  
44071.97 SQM  
(10.89 ACRES)



STP  
500 SQM

LOCAL SHOPS-2  
400 SQM

STP/SERVICES  
3157.57 SQM

LOCAL SHOPS  
810.44 SQM

STP/SERVICES  
3157.57 SQM

GROUP HOUSING (GH-1)  
39169.99 SQM  
(9.68 ACRES)

SCHOOL  
11318.07 SQM

PROPOSED FUTURE DEVELOPMENT  
12549.14 SQM  
(3.10 ACRES)

SAT TEMPLE  
7806.23 sqm  
(1.93 acres)

MALL & HOTEL  
12241.00 SQMT  
(3.02 ACRES)

SIGN BOARD HOSPITAL  
4180.70 SQMT  
(1.03 ACRES)

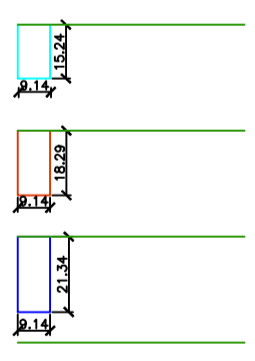
AREA 547.75 SQMT

AREA 250.84 SQMT

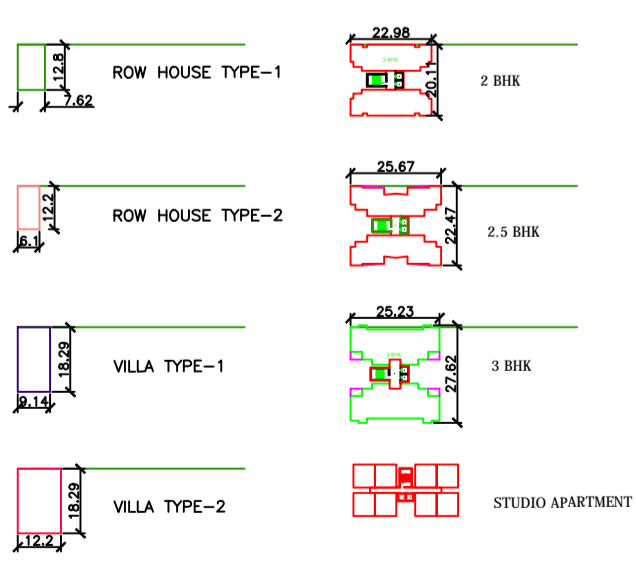
AREA 885.06 SQMT

#### LEGEND:

##### EXISTING PLOTS:

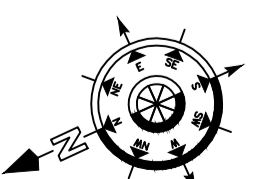


##### PROPOSED INDEPENDENT ROW HOUSES, VILLAS & GROUP HOUSING



PROJECT:  
**SHRI SAI BHUMI ENCLAVE  
AT SULTANPUR ROAD,  
LUCKNOW**

DATED:  
15/12/2015  
SCALE:  
DRG NO:  
FC/SSBE/LAY/01



PROPOSED LAYOUT

**four corner**  
ARCHITECTURE, INTERIORS, STRUCTURE